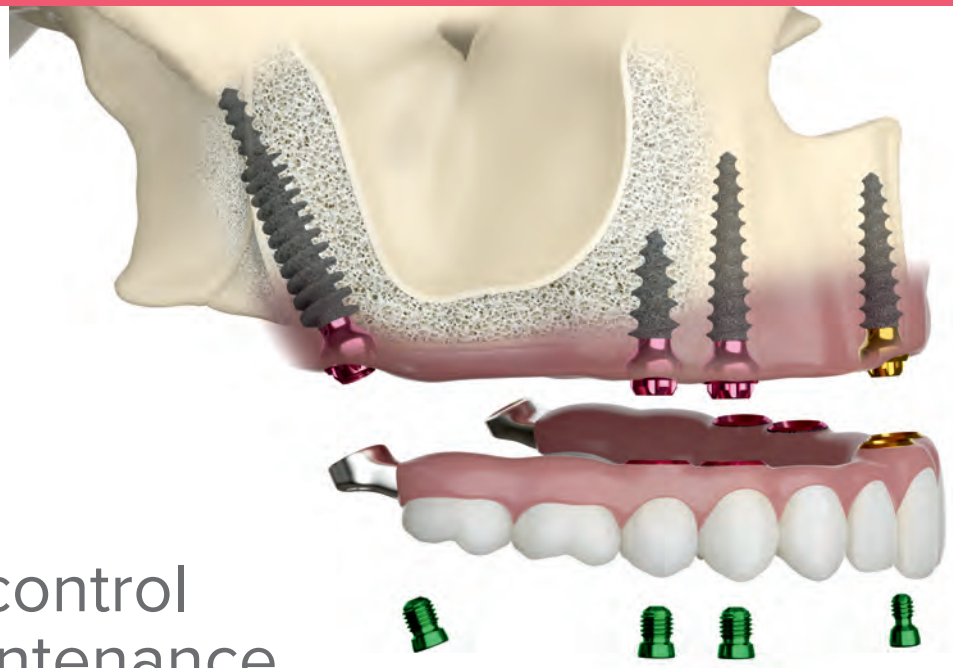


One-piece implant

Screw retained



Complete control & easy maintenance

Screw-retained restorations represent a secure and easy way to repair, maintain prosthesis, and treat peri-implant tissue inflammations more efficiently without damaging the suprastructure. ROOTT P, ROOTT M, ROOTT S are designed to use in combination for a cement-free full jaw restoration with 60 degrees between implant axes. Also, can be used with all ROOTT implants.

ROOTT **P**



Long enough to tolerate the distance between pterygoid area and maxilla

Ø 2.5 prosthetic screw

Extreme condensing threads for excellent stability

L 16–26mm
Ø 3.5–4.5mm

ROOTT **M**



Designed for posterior jaw area

Ø 2.5 prosthetic screw

Condensing threads

L 6–20mm
Ø 3.5–4.5mm

ROOTT **S**



Excellent aesthetics in front jaw bone

Ø 1.8 prosthetic screw

Condensing threads

L 8–16mm
Ø 3–3.5mm

- ✓ Less invasive
- ⌚ Immediate loadings
- 🔧 Avoids sinus lift & bone grafting
- 👓 Multiple restoration

Ultra resistant Ø2.5 mm screw



- 🔩 Easy handling
Less likely losing a screw
- 🦷 Excellent fixation
Withstands occlusal forces



Easy management



Clinical cases



By Med. Dent. Henri Diedrich



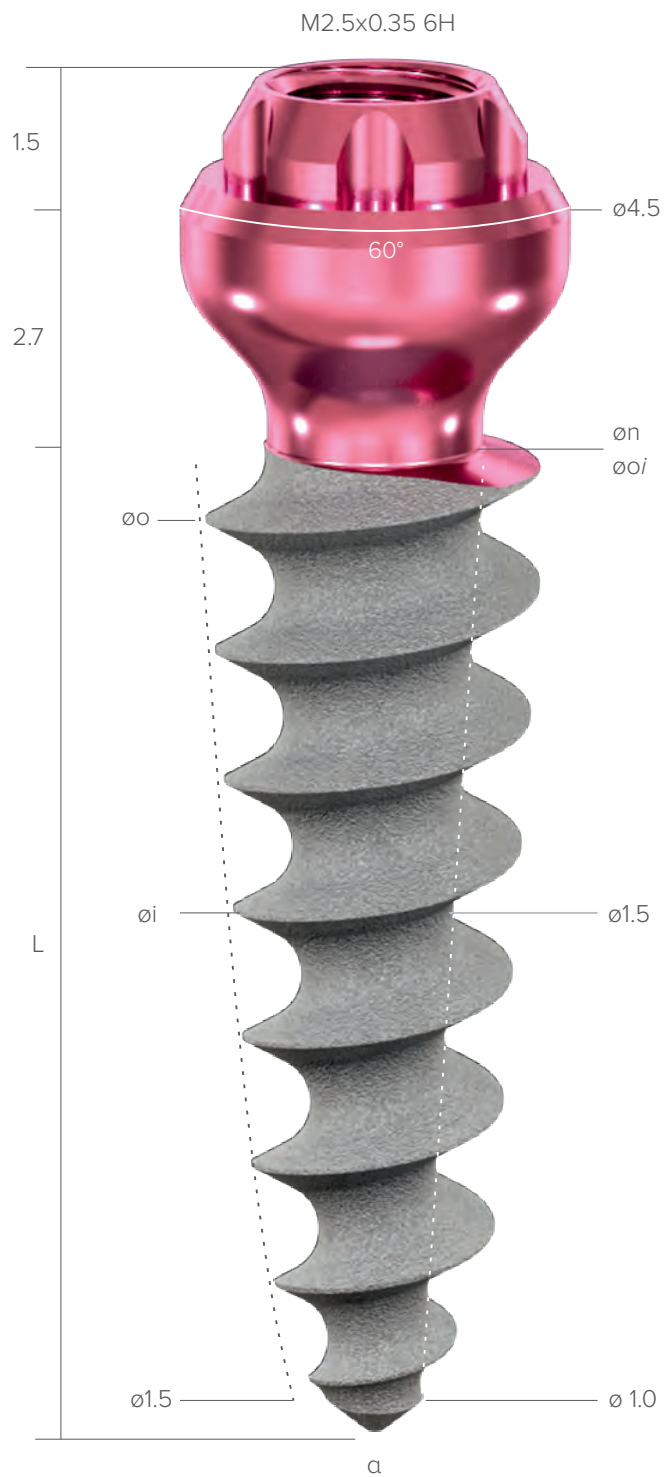
By Dr. Daniel Saad



More cases



ROOTT M

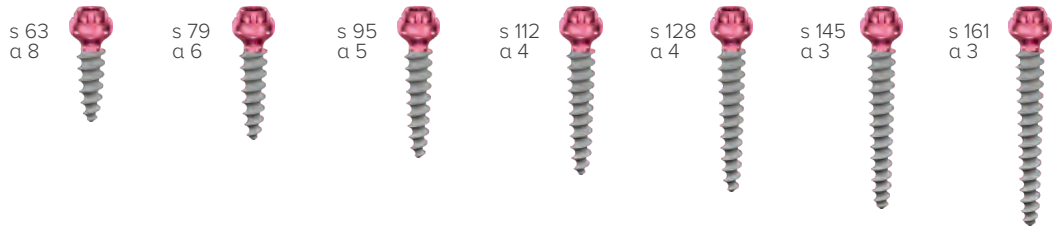


o - occlusal diameter (mm); i - intraosseous diameter (mm); a - apical diameter (mm); n - neck diameter;
α - total internal angle (°); s - intraosseous square area (mm²); i = internal.

o / L 6 mm 8 mm 10 mm 12 mm 14 mm 16 mm 18 mm 20 mm

ø 3.0 C3008m C3010m C3012m C3014m C3016m C3018m C3020m

øi 2.5
n 2.05



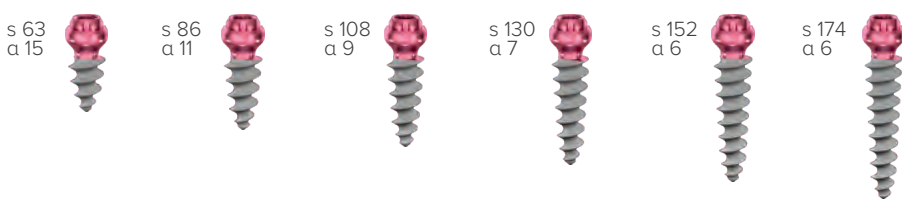
ø 3.5 C3506m C3508m C3510m C3512m C3514m C3516m C3518m C3520m

øi 2.8
n 2.05



ø 4.0 C4006m C4008m C4010m C4012m C4014m C4016m

øi 3.3
n 2.55



ø 5.0 C5006m C5008m C5010m C5012m C5014m

øi 4.3
n 2.55



ø 6.0 C6006m C6008m C6010m C6012m C6014m

øi 5.3
n 2.55

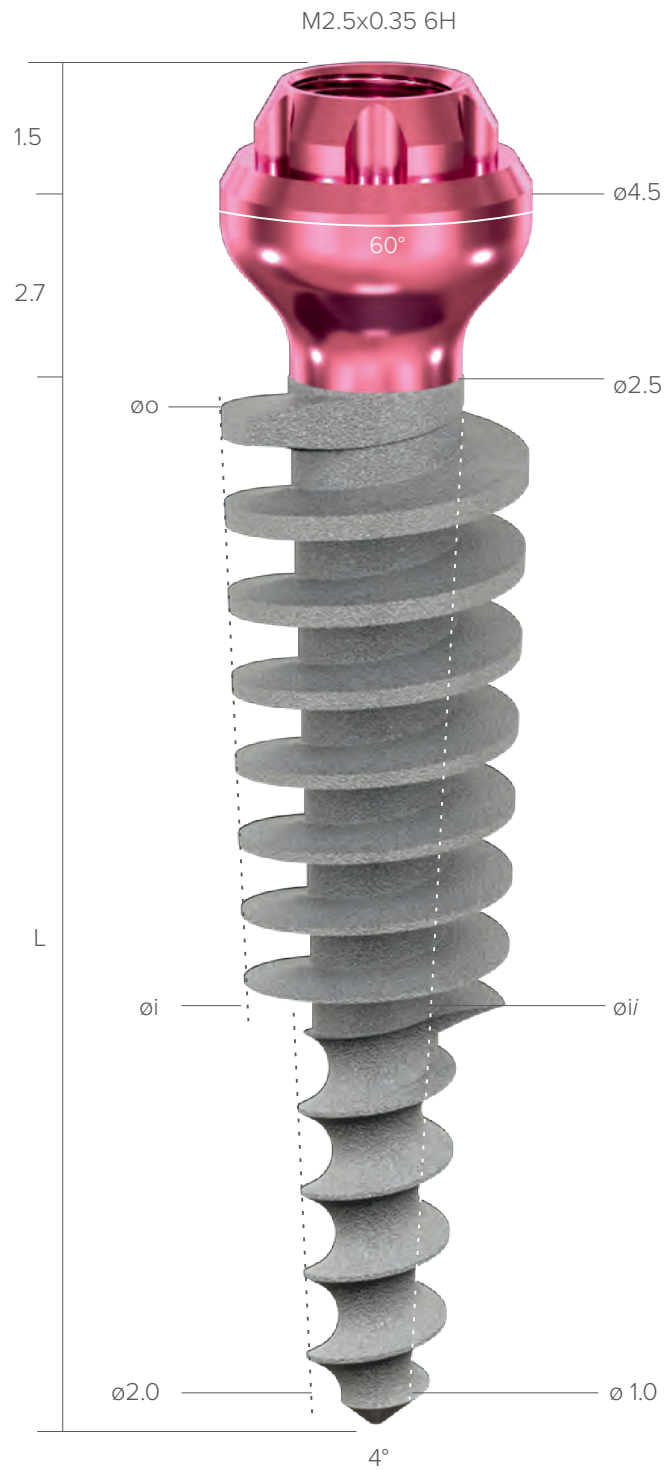


ø 8.0 C8006m C8008m C8010m C8012m C8014m

øi 7.3
n 2.55



ROOTT P



o - occlusal diameter (mm); i - intraosseous diameter (mm); a - apical diameter (mm); n - neck diameter;
α - total internal angle (°); s - intraosseous square area (mm²); i = internal.

o / L 16 mm 18 mm 20 mm 22 mm 24 mm 26 mm

ø 3.5 C3516mp C3518mp C3520mp C3522mp C3524mp C3526mp

i 2.8
i/ 1.7
s 175



i 2.7
i/ 1.7
s 198



i 2.5
i/ 1.5
s 220



i 2.6
i/ 1.5
s 248



i 2.6
i/ 1.5
s 274



i 2.6
i/ 1.5
s 297



ø 4.5 C4516mp C4518mp C4520mp C4522mp C4524mp C4526mp

i 3.9
i/ 1.8
s 251



i 3.7
i/ 1.7
s 290



i 3.6
i/ 1.5
s 329



i 3.4
i/ 1.4
s 369



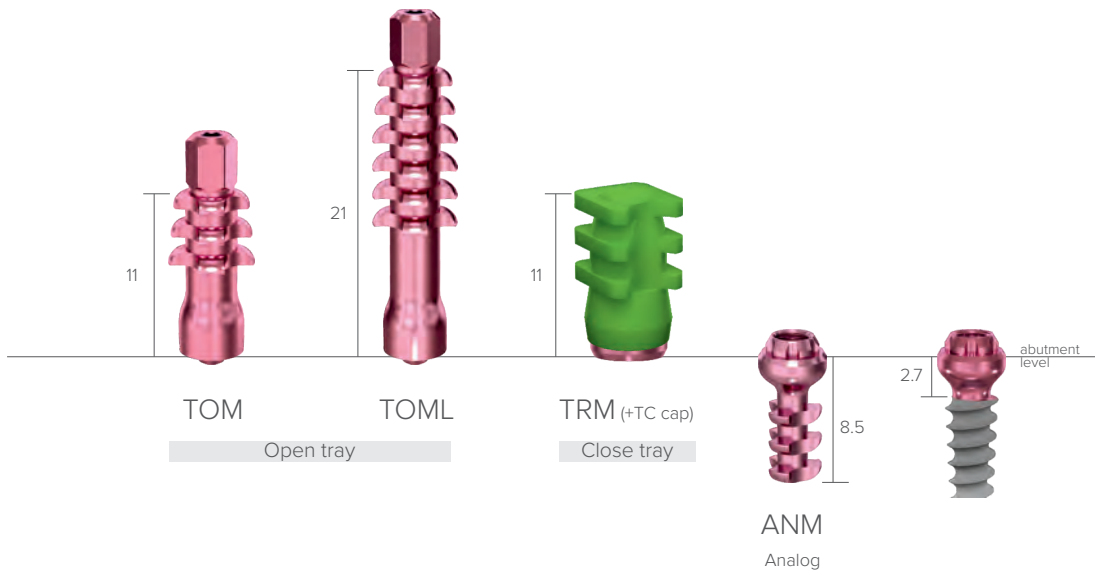
i 3.3
i/ 1.2
s 402



i 3.3
i/ 1.3
s 443



Transfers & implant analogs

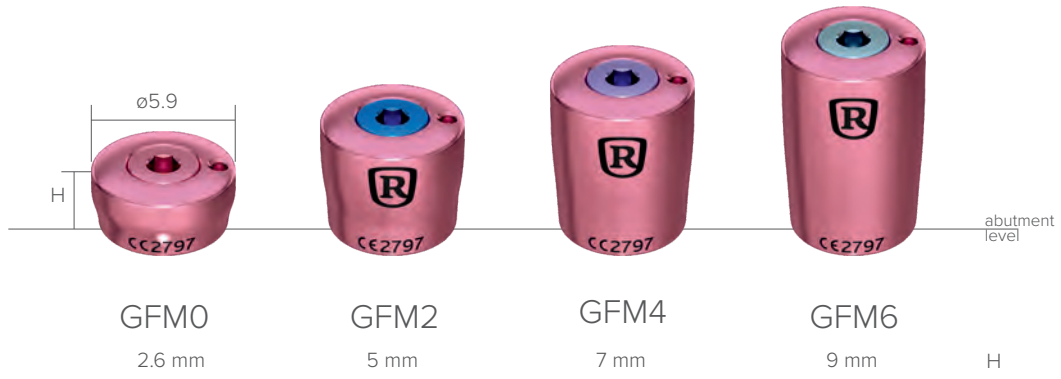


Abutments



Healing abutments

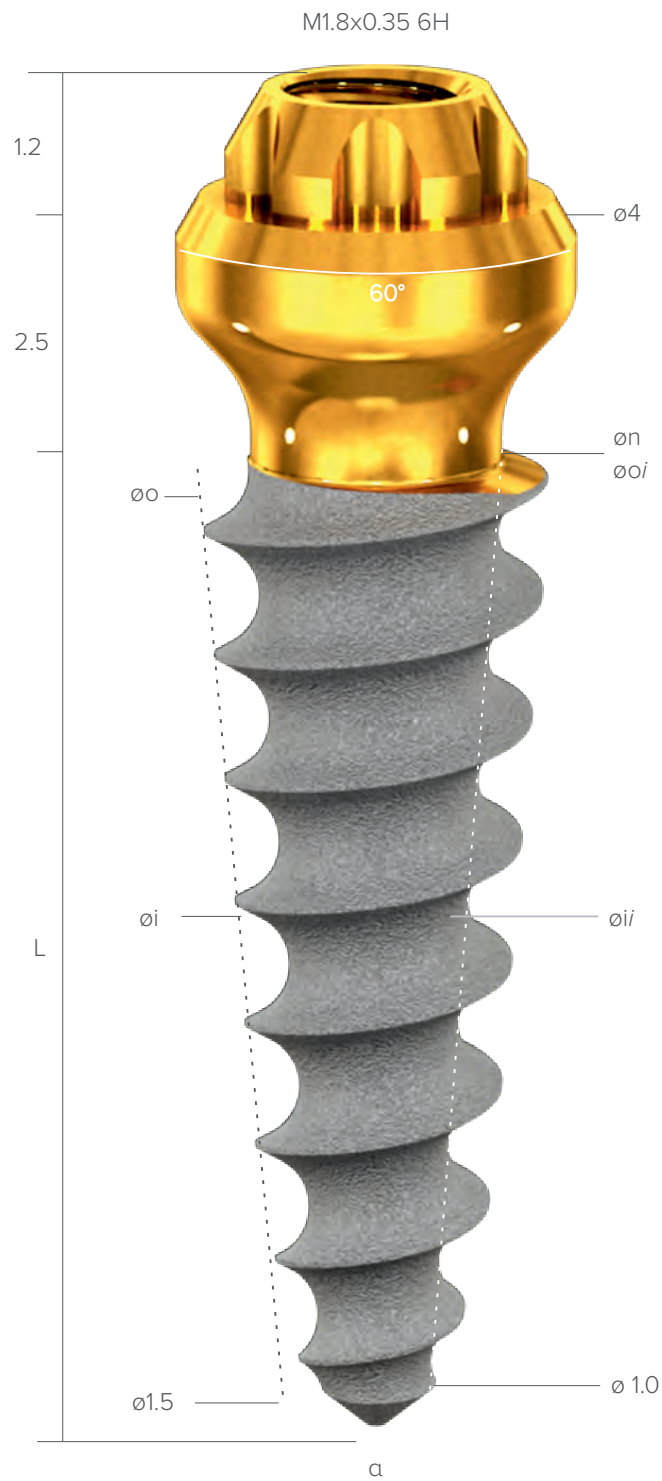
Regular



Narrow



ROOTT S



o - occlusal diameter (mm); i - intraosseous diameter (mm); a - apical diameter (mm); n - neck diameter;
α - total internal angle (°); s - intraosseous square area (mm²); i = internal.

o / L 6 mm 8 mm 10 mm 12 mm 14 mm 16 mm

ø 3.0
øi 2.5
øj 1.5
n 2.05

C3008ms C3010ms C3012ms C3014ms C3016ms

s 63
a 8 s 79
a 6 s 95
a 5 s 112
a 4 s 128
a 4



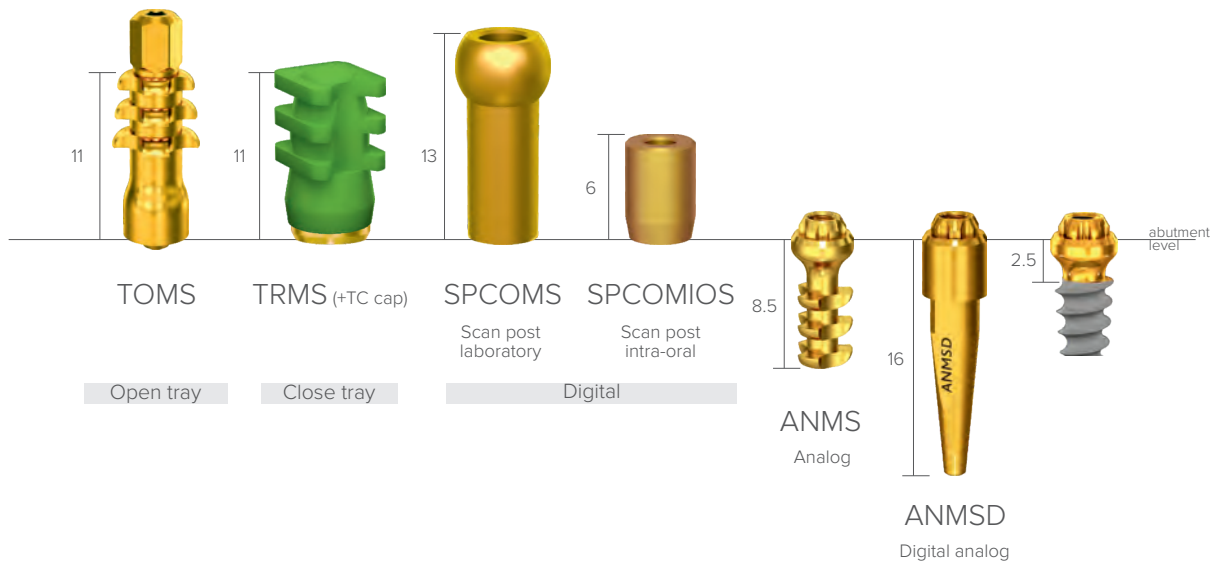
ø 3.5

C3506ms C3508ms C3510ms C3512ms C3514ms C3516ms

s 54
a 15 s 72
a 11 s 91
a 9 s 109
a 7 s 127
a 6 s 146
a 5



Transfers & implant analogs

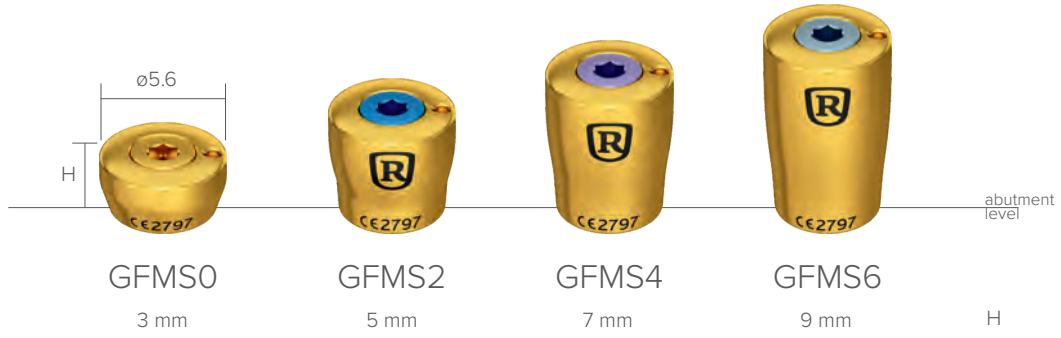


Abutments



Healing abutments

Regular



Narrow



Handles



ETH

Surgical handle, handpiece

ETR

Surgical handle, ratchet



ETAO

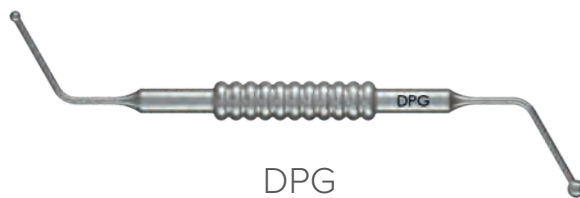
Surgical handle, AO



DW

Handle for implant driver

Gauges



DPG

Implant depth gauge



DIR

Alignment bar



P2

Parallel pin

Screwdrivers

1.25 mm

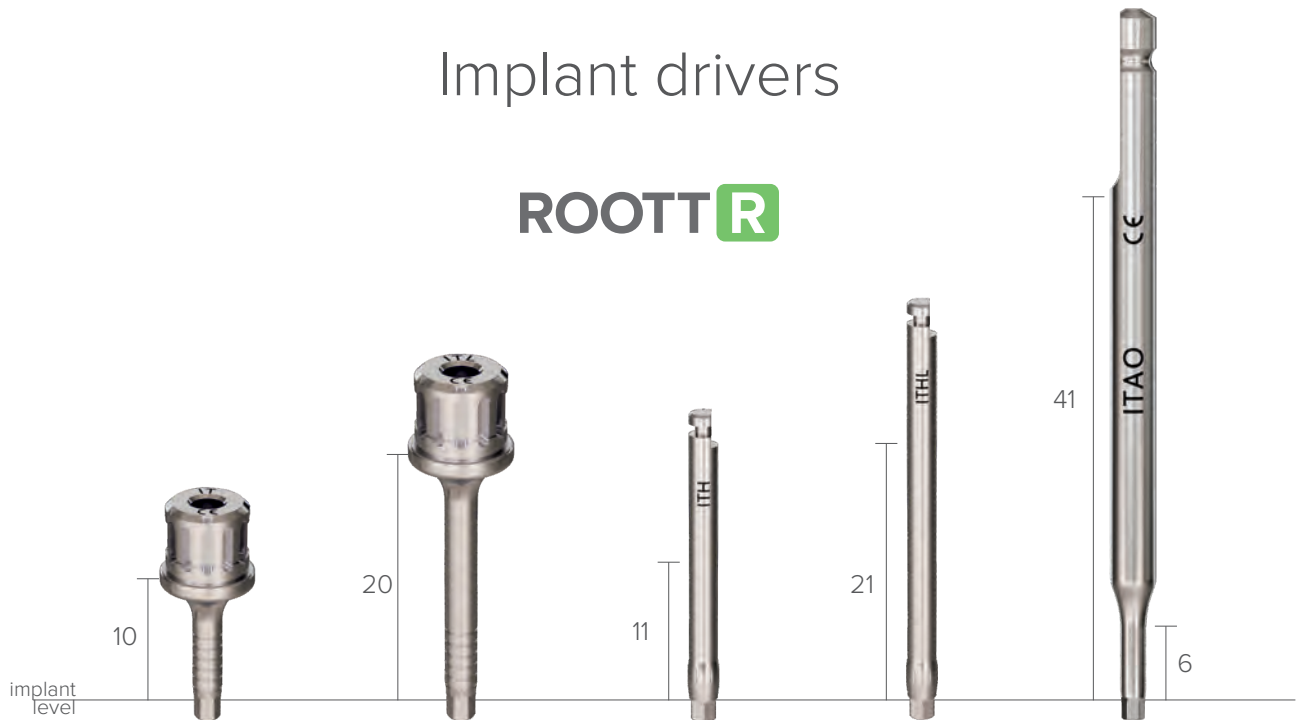


SD SDL SDXL SDLB SDXLB SDH SDHL SDHXL SDAO SDM SDML
 Ball hex Ball hex

For ratchet For handpiece For AO handle Manual

Implant drivers

ROOTT^R



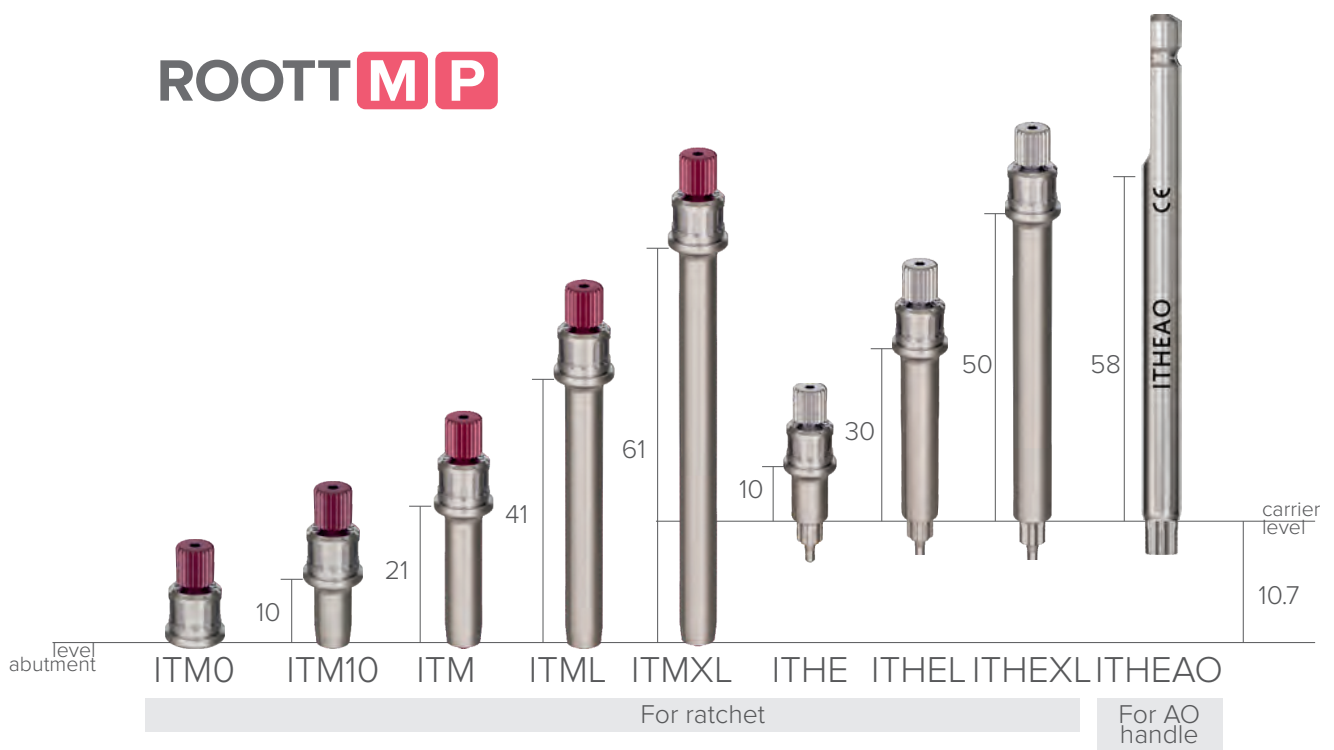
IT ITL ITH ITHL ITAO

For ratchet For handpiece For AO handle

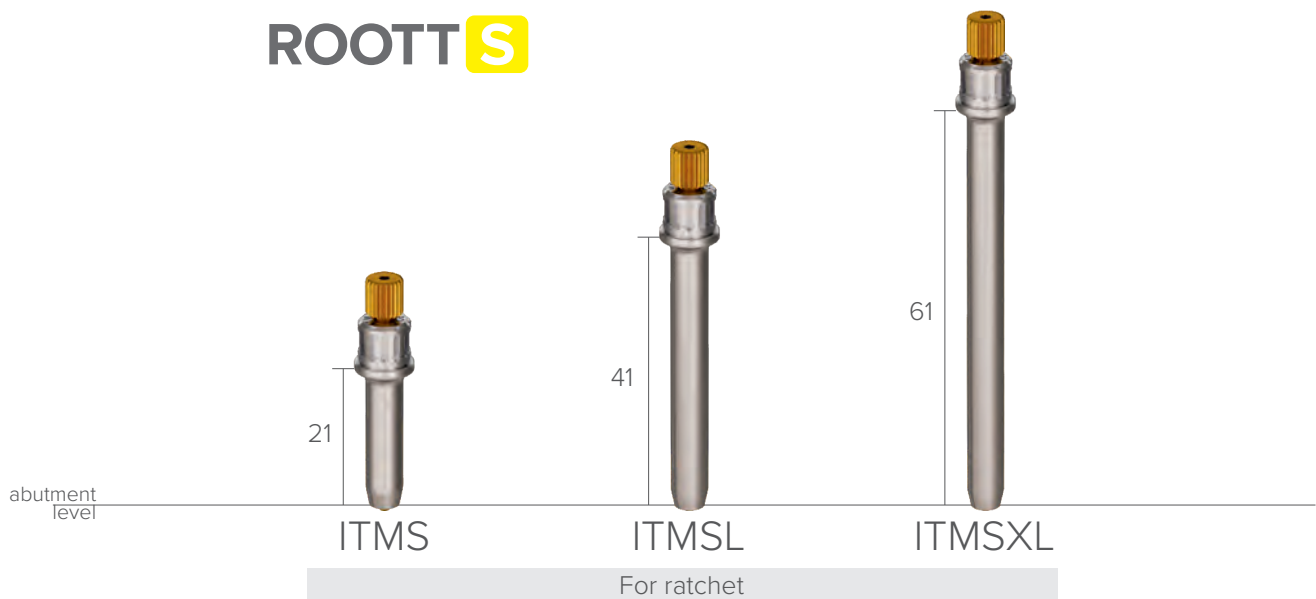
ROOTT C



ROOTT M P



ROOTT S



Cassettes

RC

MS

TRS



General instruments



TW70

Torque wrench 10-70 Ncm



BT

Abutment bender for ROOTT



BTK, BTKL

Abutment bender for ROOTT



ETAO

Drill extension for AO handle **C**

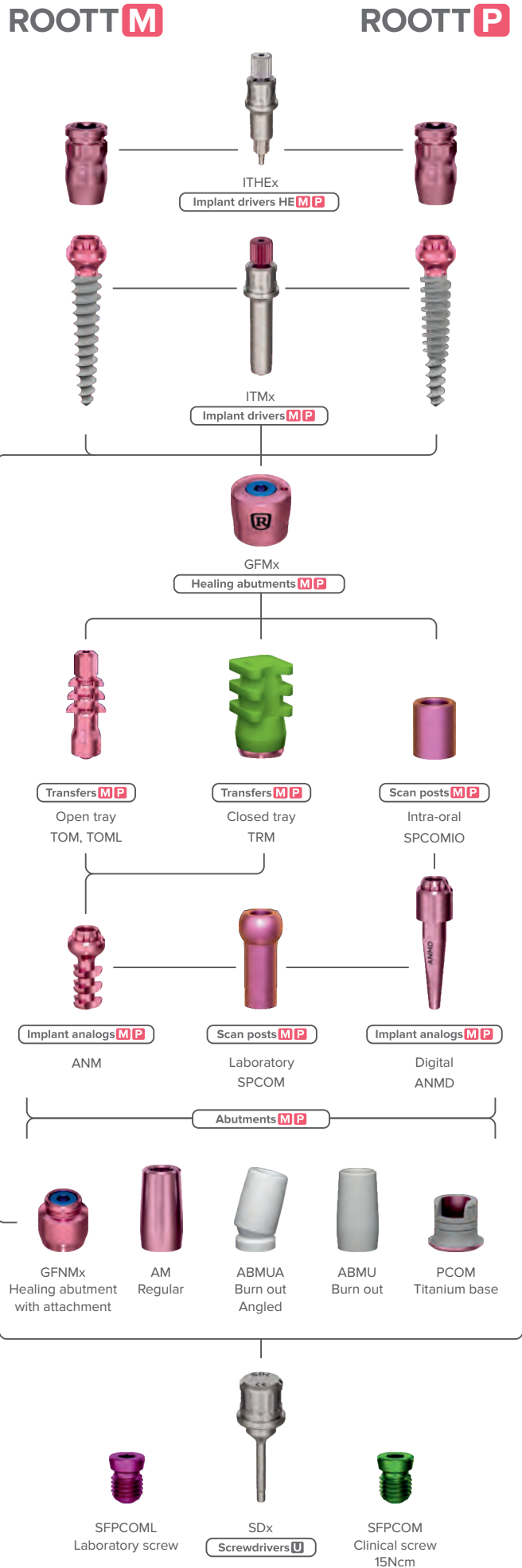
Abutment extractors



SR, SRL

Abutment extractors for ROOTT **R**

Prosthetic Workflow





Meet the intelligence with DIGITAL SOLUTIONS

Time-efficient and accurate options enhance quality possibilities and bring the modern approach to the dental industry that dental professionals seek.

Precision is essential considering the right angle, size, depth and width for dental professionals; therefore, ROOTT offers the digital workflow allowing the possibility of designing a complete dental solution. The digital library will provide options and introductions into using software and transferring the skills into the digital workflow from the tools required to design the exterior to components offered to solve basic or complex cases.



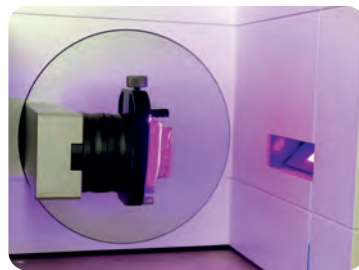
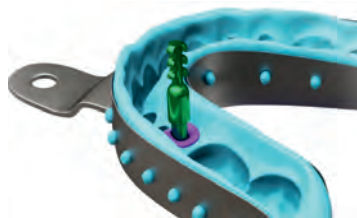
ROOTT
digital
libraries



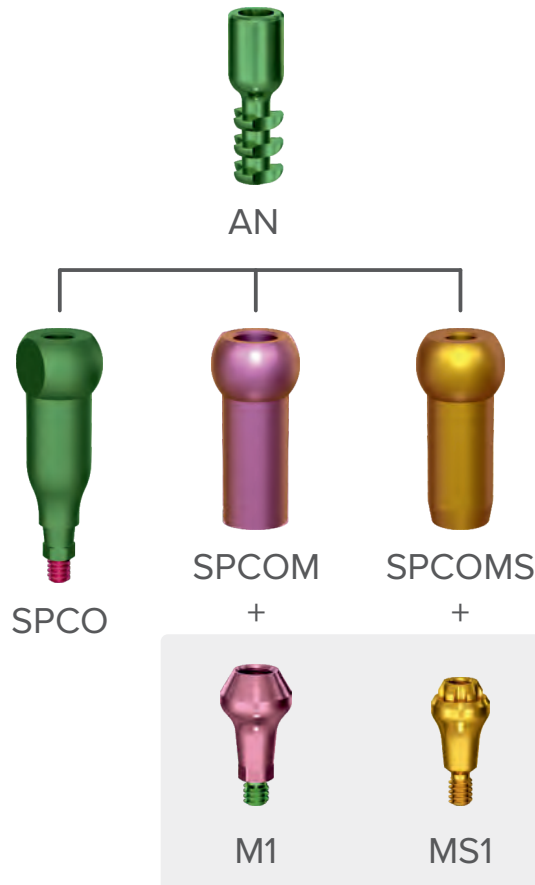
Intraoral scanner



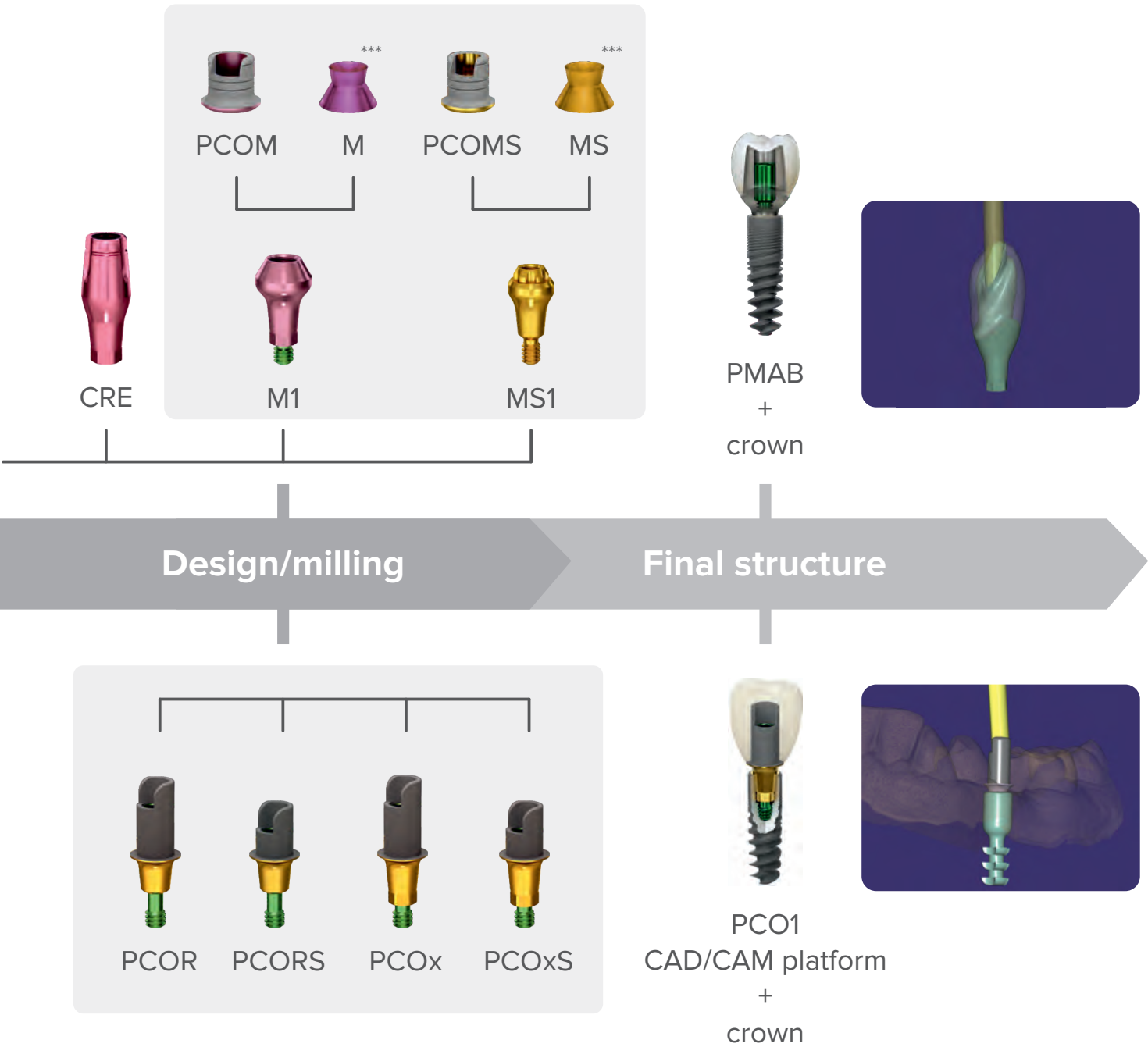
Scan/Impression



Extraoral scanner



Digital workflow **ROOTT**^R



* Cerec part for Sirona

** Premilled abutment blank

*** MU abutment is only accessible in digital library with angulation option and used with SFPCOMS screw for MS1, SFPCOM screw for M1

Abutments in the light grey background are angulated from 0° to 20° and are easily handled with an SDLB screw driver.



ANED



TRA



TOES



TOEA



TOE



HE



7mm



5mm



4mm



3mm

External platform



TCE
TCES
TCEXS



PCE
PCES
PCEXS

Intraoral

Scan/Impression

Extraoral



ANE



TRA



TOES



TOEA



TOE



HE



7mm



5mm



4mm



3mm

External platform



TCE
TCES
TCEXS



PCE
PCES
PCEXS



Digital workflow **ROOTT**



Metal framework

Prosthesis with cement

Design/milling

Final structure

Telescopic abutments
External platform

Prosthesis with
telescopic solutions

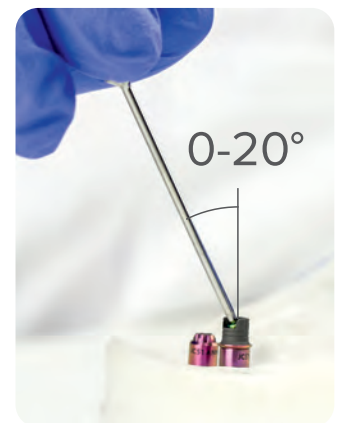
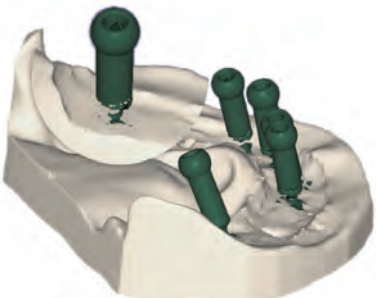
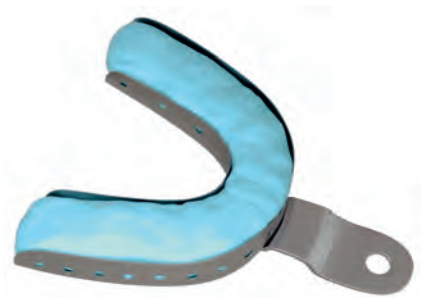
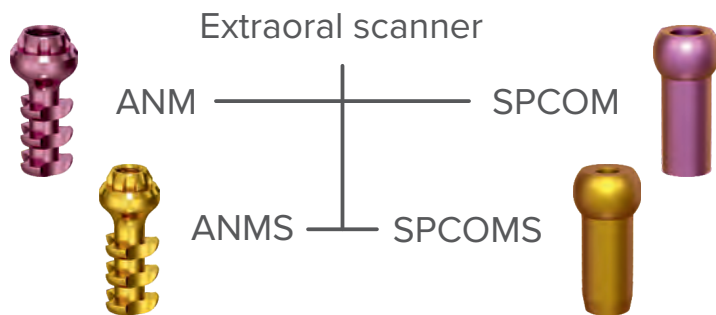
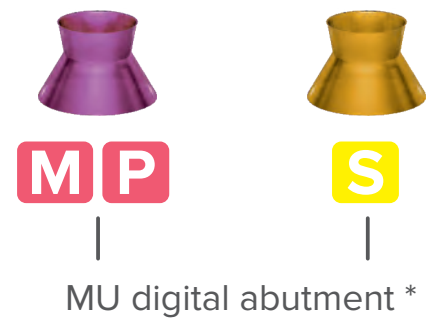
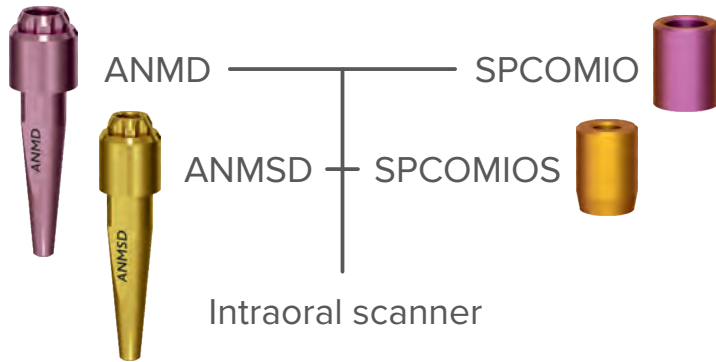
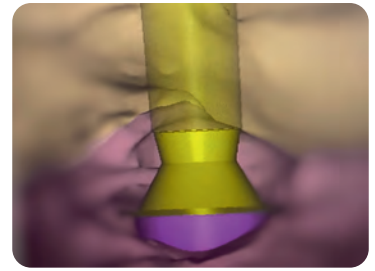
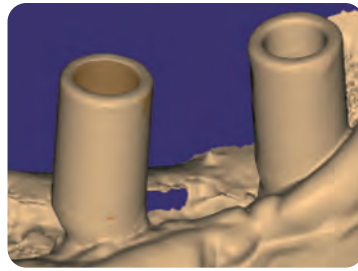
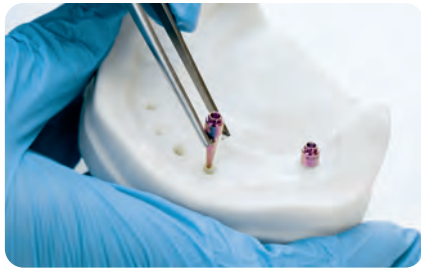


+



TCE TCES TCEXS
PCE PCES PCEXS



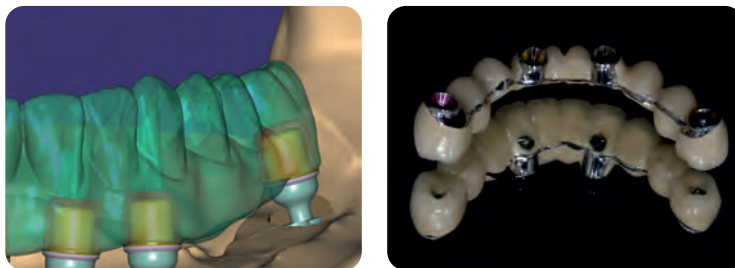


Digital workflow **ROOTT M P S**



Metal Framework

Final structure



* MU abutment is only accessible in digital library with angulation option and used with SFPCOMS screw for ROOTT S, SFPCOM screw for ROOTT M/P.

Together with specialists for standards that matters

ROOTT has always sought excellence and reliability by utilizing innovative approaches and solutions right from the design stage. Since its foundation, ROOTT has put research and cutting-edge innovation at the forefront of its mission. This is the result of diligent, dedicated work and close cooperation with the Open Dental Community (Luxembourg) – an independent, international team of expert dentists and academic professionals, which provides a significant link between industry and dental professionals.

ROOTT never compromises on functionality and simplicity dedicated to dental professionals.

Simplicity

Built with profound knowledge and insight of what is necessary for practitioners to achieve perfection in their successful clinical practice.

Functionality

To ensure functionality and flexibility every product is probed, diligent and dedicated for every specialist need. Each and every single piece of product is created with the research of doctors.



Innovations and development network of dental specialists around the world.
Life learning concept and constant improvement of global dental knowledge and skills.

Monthly events in Spain, Abu Dhabi, Dubai, Austria, Munich



Restoring smile in one day

Conrad Abu Dhabi Etihad Towers, Abu Dhabi



Full jaws re-invented: Innovative solutions made handy

The St.Regis Abu Dhabi



Infinite potential with immediate implantation. Secrets of successful cases

The Abu Dhabi EDITION, Abu Dhabi



Successful implantation in atrophied bone

Hilton Vienna Plaza, Austria



Full jaws re-invented: Innovative solutions made handy

Conrad Dubai Hotel, Dubai



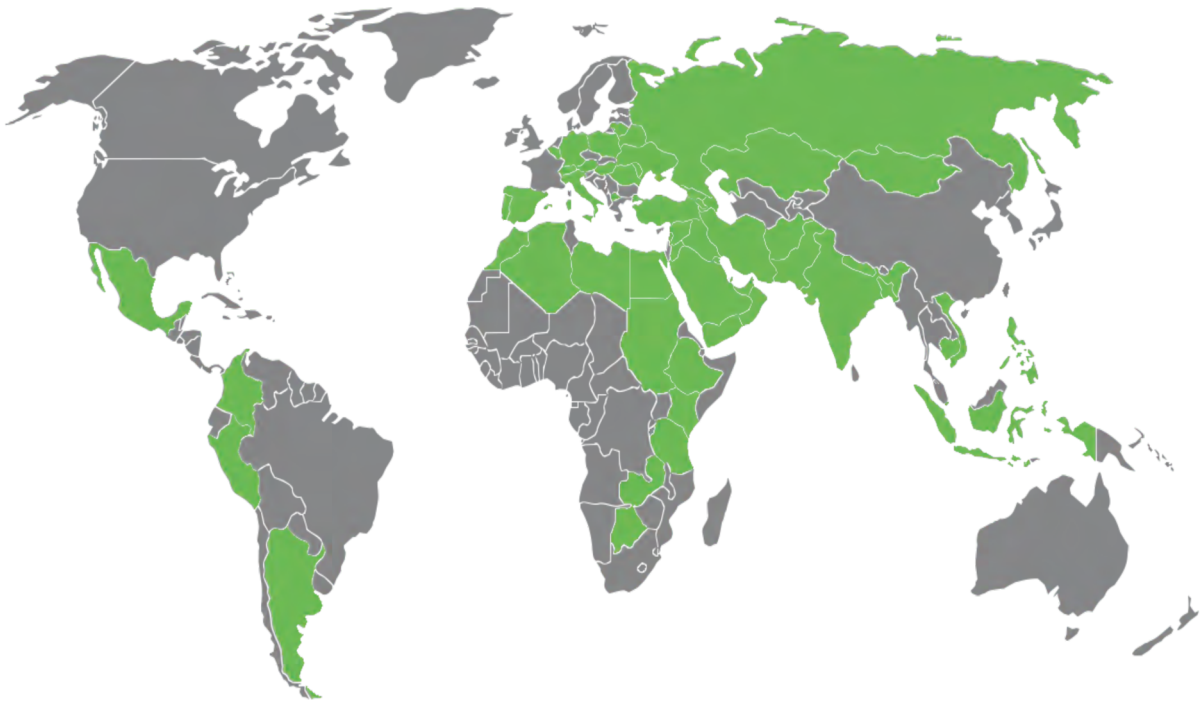
Infinite potential with immediate implantation. Secrets of successful cases

Conrad Dubai Hotel, Dubai



70+

distributors



Products
& events

roott.ch



Clinical
cases

opdeco.org

