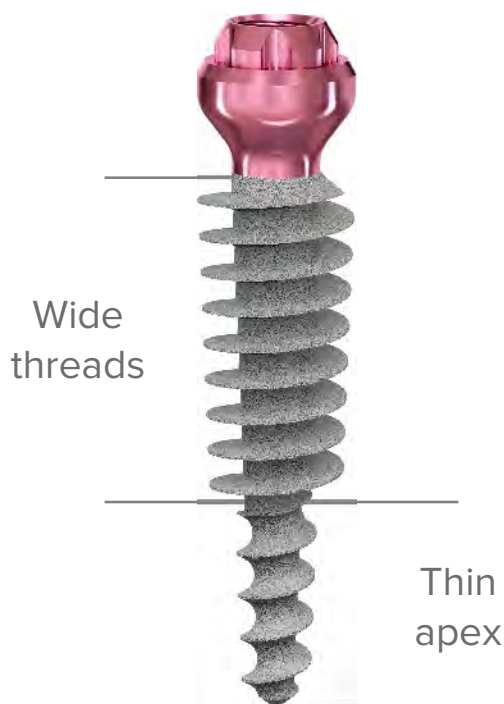




ROOTT

Minimally invasive for maximum results



One-piece implants to minimise
surgical time and costs

ROOTT PMS

One-piece implant

Screw retained



Complete control & easy maintenance

Screw-retained restorations represent a secure and easy way to repair, maintain prosthesis, and treat peri-implant tissue inflammations more efficiently without damaging the suprastructure. ROOTT P, ROOTT M, ROOTT S are designed to use in combination for a cement-free full jaw restoration with 60 degrees between implant axes. Also, can be used with all ROOTT implants.

ROOTT **P**



Long enough to tolerate the distance between pterygoid area and maxilla

Ø 2.5 prosthetic screw

Extreme condensing threads for excellent stability

L 16–26mm
Ø 3.5–4.5mm

ROOTT **M**



Designed for posterior jaw area

Ø 2.5 prosthetic screw

Condensing threads

L 6–20mm
Ø 3.5–4.5mm

ROOTT **S**



Excellent aesthetics in front jaw bone

Ø 1.8 prosthetic screw

Condensing threads

L 8–16mm
Ø 3–3.5mm

- ✔ Less invasive
- 🕒 Immediate loadings
- 🔪 Avoids sinus lift & bone grafting
- 👓 Multiple restoration

Ultra resistant Ø2.5 mm screw



- 🔩 Easy handling
Less likely losing a screw
- 🦷 Excellent fixation
Withstands occlusal forces

Easy management



TRS



TRS-mini



Clinical cases



By Med. Dent. Henri Diedrich



By Dr. Daniel Saad



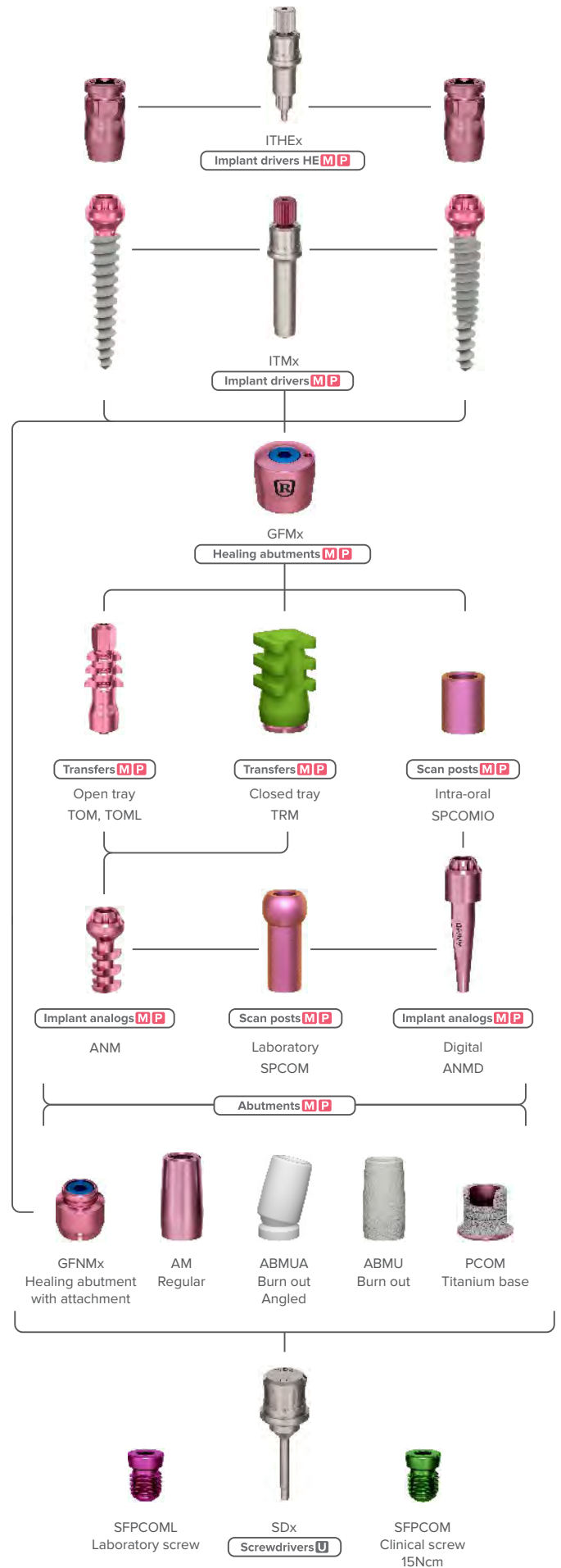
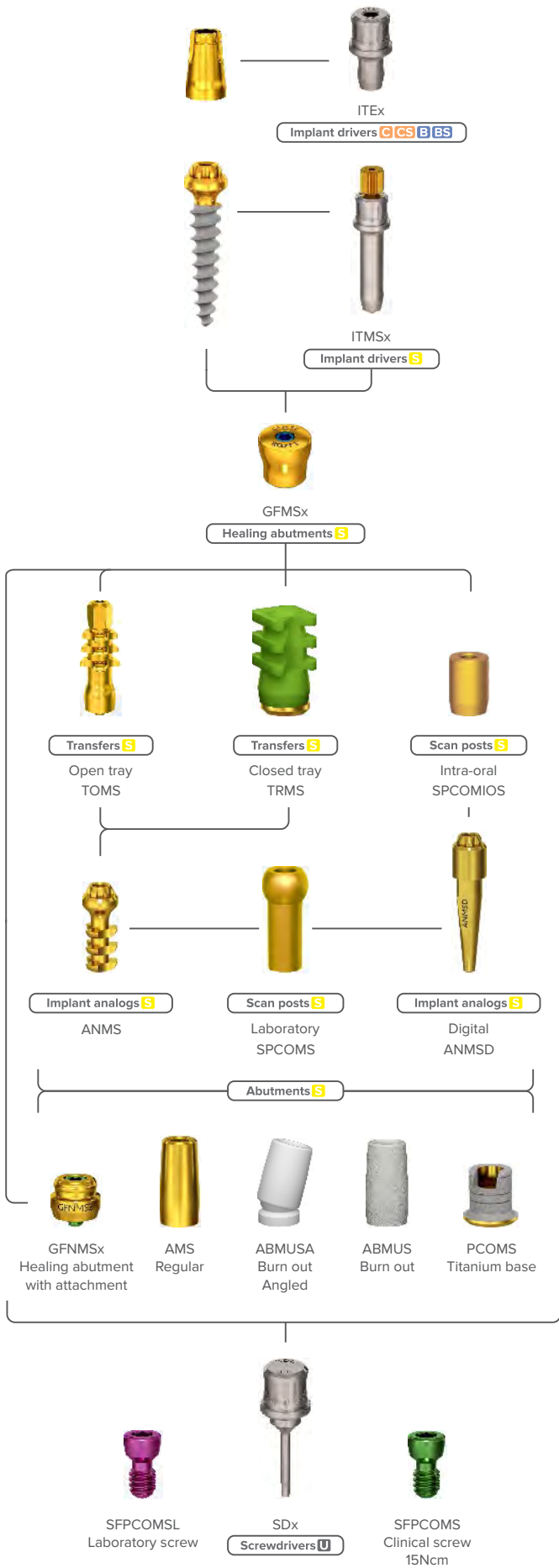
More cases



ROOTT **S**

ROOTT **M**

ROOTT **P**





Meet the intelligence with DIGITAL SOLUTIONS

Time-efficient and accurate options enhance quality possibilities and bring the modern approach to the dental industry that dental professionals seek.

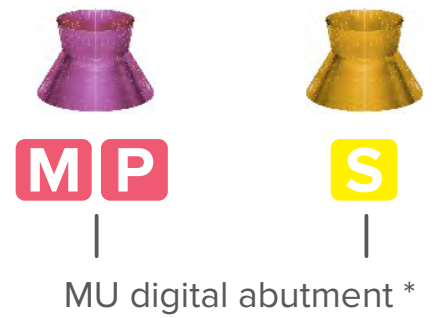
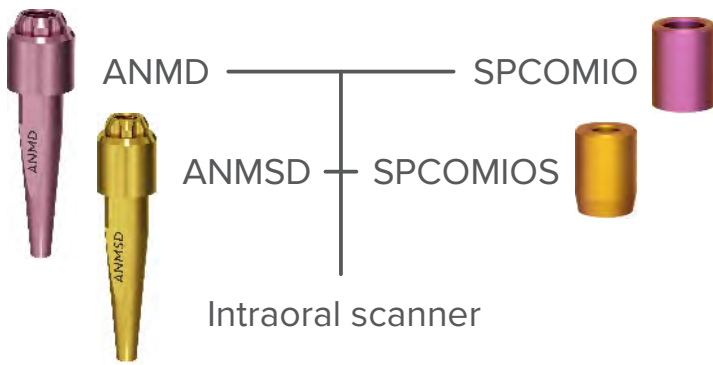
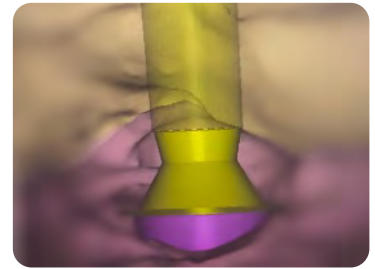
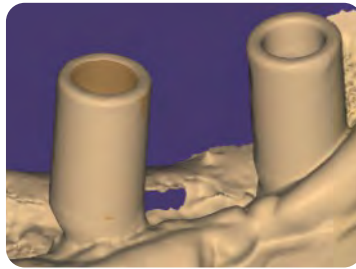
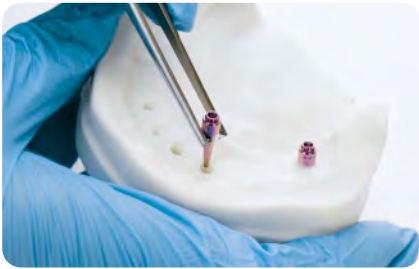
Precision is essential considering the right angle, size, depth and width for dental professionals; therefore, ROOTT offers the digital workflow allowing the possibility of designing a complete dental solution. The digital library will provide options and introductions into using software and transferring the skills into the digital workflow from the tools required to design the exterior to components offered to solve basic or complex cases.



ROOTT
digital
libraries

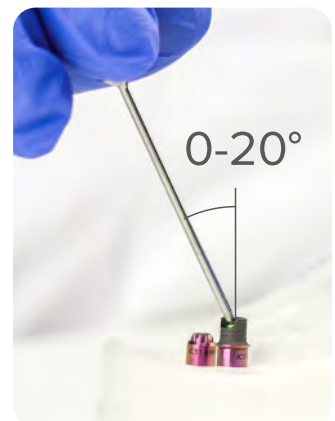
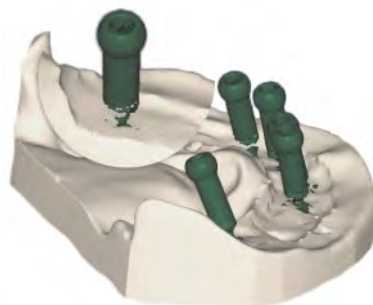
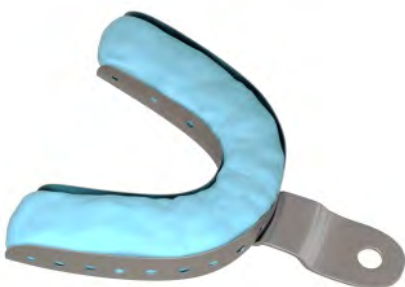
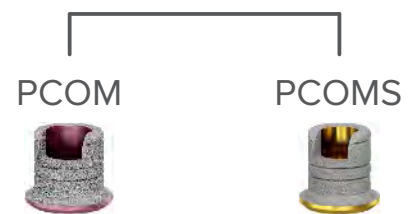
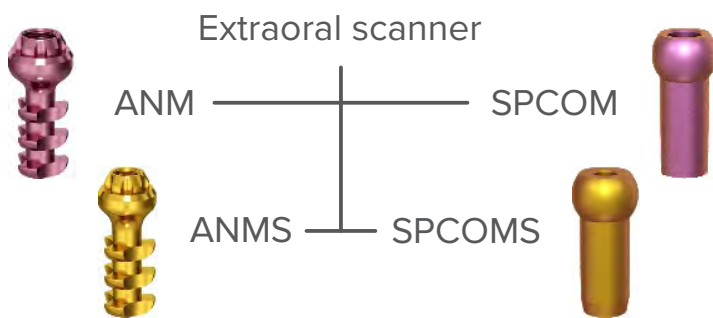


Digital workflow **ROOTT M P S**



Scan/Impression

Design/milling





Metal Framework

Final structure

PCOM



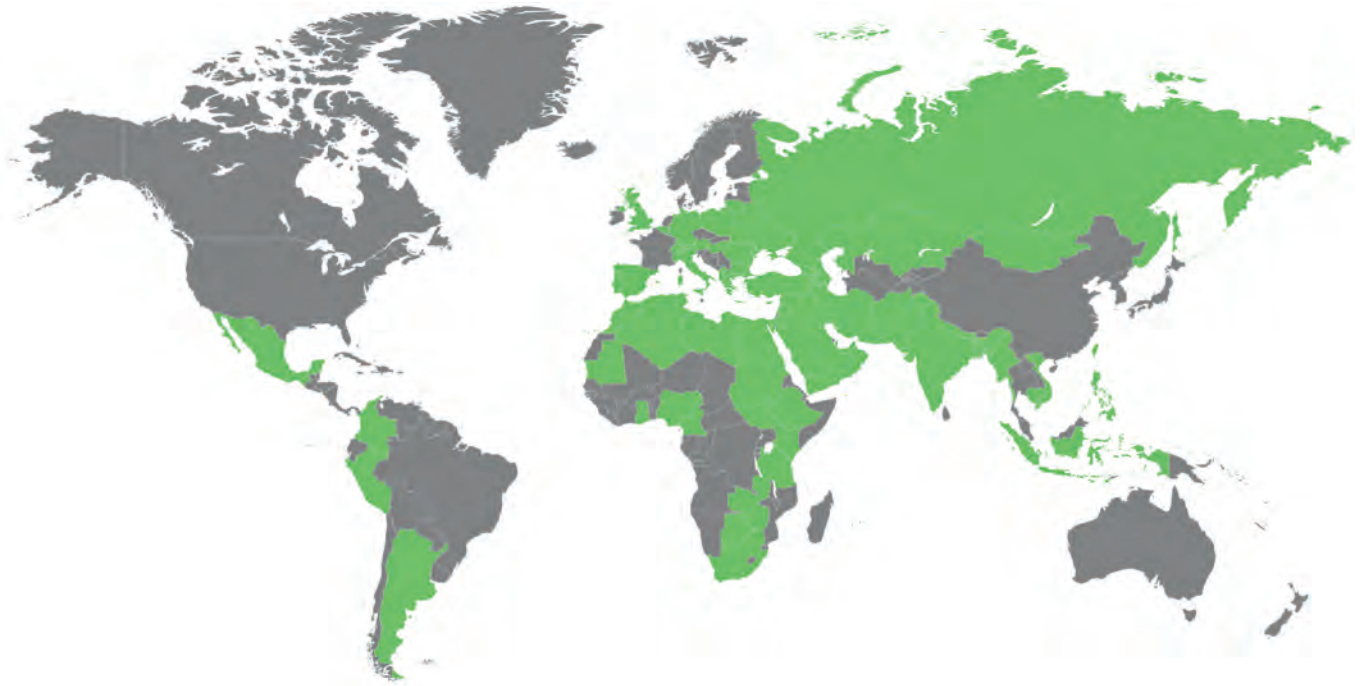
PCOMS



* MU abutment is only accessible in digital library with angulation option and used with SFPCOMS screw for ROOTT S, SFPCOM screw for ROOTT M/P.

70+

distributors



ROOTT UK

www.roottuk



<https://rootimplants.co.uk/>

Two Piece Spec



<https://rootimplants.co.uk/implant-range/>

Training

UK Training



<https://rootimplants.co.uk/training/>

Clinical cases

General



www.facebook.com/opendentalcommunity/

Facebook



www.facebook.com/rootimplants.uk/

One Piece Screw Spec



<https://rootimplants.co.uk/implant-range/>

How to use R



<https://rootimplants.co.uk/root-r-how-to-use-videos/>

Advanced



www.corticallyfixed.com/case-reports/

t: 020 3633 6150

e: info@rootimplants.co.uk

w: www.roottimplants.co.uk

l: www.linkedin.com/company/70899052



TRATE UK LTD
85 Great Portland Street
London, W1W 7LT
United Kingdom